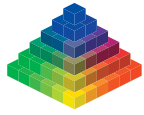
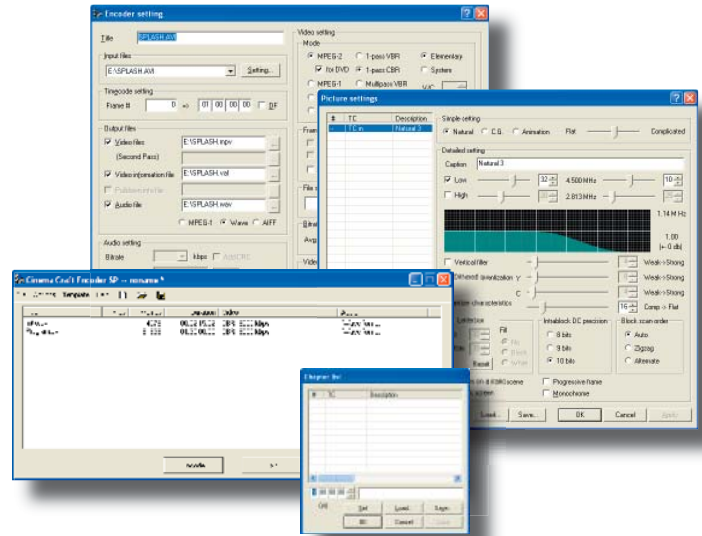


Hollywood quality offline MPEG-1/MPEG-2 Encoder



visible light

kubeTM
PostSP



Hollywood-Style Offline MPEG-2 Encoding In A Compact Case

- Encode AVI and Quicktime to MPEG-2 with the same technology used in Hollywood
- Add your DVD authoring software and create DVD-Video discs with the built in CD/DVD writer
- Streamlined MPEG production; just drag and drop your video files or export from Adobe Premiere
- Features Cinema Craft encoder, with batch encoding batch encoding, multi-pass Variable Bit Rate (VBR) encoding, 3:2 pulldown handling, de-interlacing, total control of low-level MPEG encoding setup, flexible chapter point support and much more
- One year limited warranty

Requires no installation or set up; comes ready to encode your AVI & Quicktime Files

Compact size - perfect for both studio and on-location use

www.visiblelight.com

Visible Light VKube PostSP



VKube System Specifications

Processor

Intel® Core 2 Duo E6300 processor

Chipset

Intel 945G + ICH7 chipset with 1066/800/533 FSB

Memory

1 GB Dual Channel DDR2 PC5300 SDRAM (667 MHz)

Operating System

Windows XP Professional

Storage

250GB Serial ATA Hard Disk (7200 RPM / 8 MB cache)

Pioneer DVR-111 combo CD/DVD writer

Audio

Realtek ALC882 7.1-channel audio

Analog audio ports

Video

16x PCI Express slot

Intel Graphics Media Accelerator 950

Expansion

16x PCI Express slot (available)

PCI 2.2 slot (occupied by encoder board)

Peripheral Interfaces

1 D-Sub 15-pin VGA port

6 USB 2.0 ports (2 front, 4 rear)

1 Mini 1394 Firewire port (front)

1 Firewire 400 port (rear)

1 serial port

1 PS/2 keyboard socket

1 PS/2 mouse socket

1 RJ-45 10/100/1000 LAN port

1 microphone jack

1 headphone jack

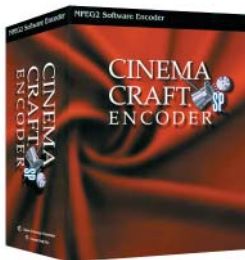
7-channel audio out

Network Interface

Onboard 10/100/1000 Gigabit Ethernet

Warranty

1 Year Limited Parts Warranty



Cinema Craft Encoder SP Specifications

- Unattended batch encoding (stand alone mode)
- Works as export plug-in in Adobe Premiere Pro
- Automatic image scaling for DVD, SuperVideoCD (SVCD) and VideoCD (VCD) modes
- Save/load chapter list or auto insert chapters from Adobe Premiere time line
- Automatic file size calculation
- 3:2 pulldown support
- Automatic adding of encoding pass for more accurate inverse 3:2 pulldown
- Built in de-interlacing
- 4:1:1 to 4:2:2 interpolation
- Complete control over MPEG encoding parameters
- Improved encoding of fades on static scenes, additional adjustments for black frames

